

# The Gospel of **LUKE**



**Chapter 6:39-49**  
**Crucial Questions**

## Luke 6

<sup>39</sup> Then Jesus gave the following illustration:  
“Can one blind person lead another? Won’t they both fall into a ditch?” <sup>40</sup> Students are not greater than their teacher. But the student who is fully trained will become like the teacher.

# WHOSE DIRECTION AM I FOLLOWING IN LIFE?



## Luke 6

41 “And why worry about a speck in your friend’s eye when you have a log in your own?”

42 How can you think of saying, ‘Friend, let me help you get rid of that speck in your eye,’ when you can’t see past the log in your own eye? Hypocrite! First get rid of the log in your own eye; then you will see well enough to deal with the speck in your friend’s eye.



# WHO'S LIFE AM I EXAMINING?

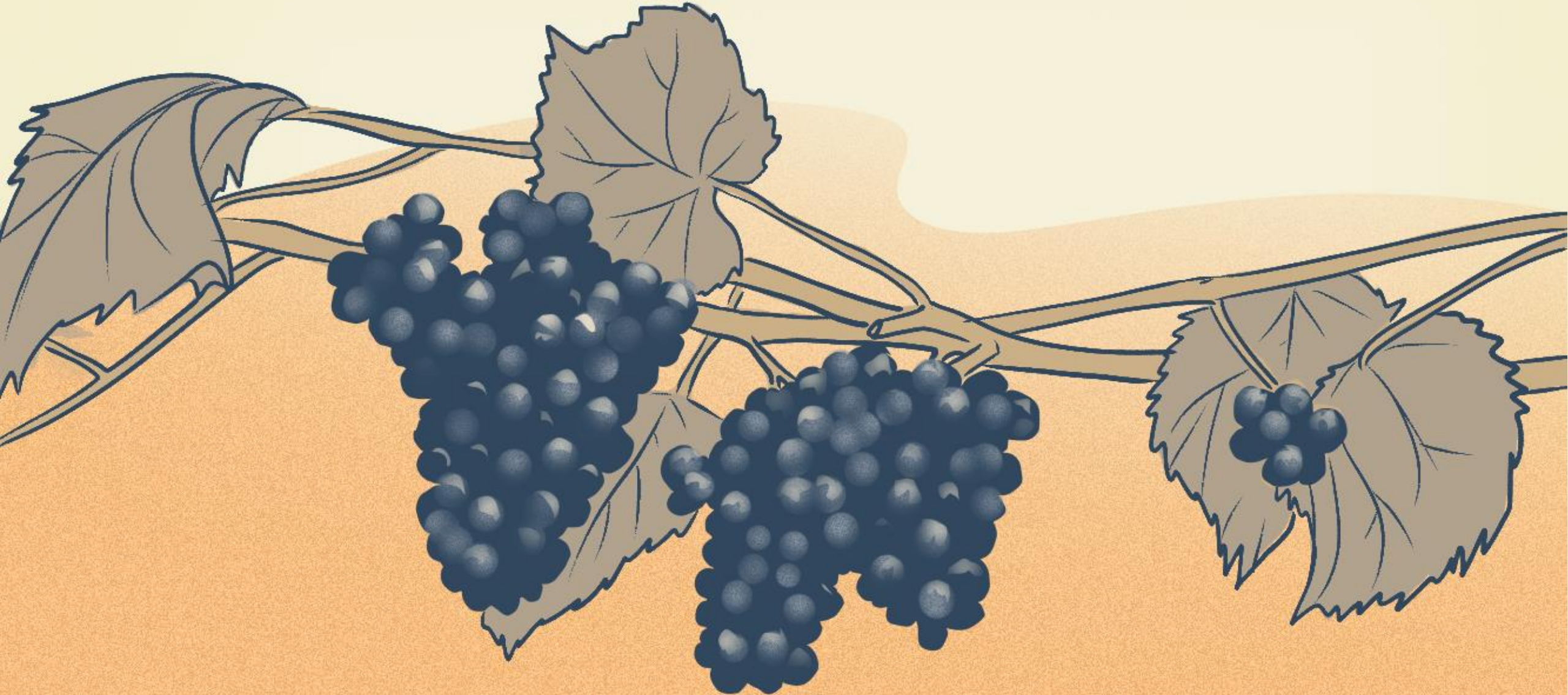


## Luke 6

<sup>43</sup> “A good tree can’t produce bad fruit, and a bad tree can’t produce good fruit. <sup>44</sup> A tree is identified by its fruit. Figs are never gathered from thornbushes, and grapes are not picked from bramble bushes. <sup>45</sup> A good person produces good things from the treasury of a good heart, and an evil person produces evil things from the treasury of an evil heart. What you say flows from what is in your heart.



# WHAT ARE MY WORDS AND ACTIONS GENERATING?



## Luke 6

<sup>46</sup> “So why do you keep calling me ‘Lord, Lord!’ when you don’t do what I say? <sup>47</sup> I will show you what it’s like when someone comes to me, listens to my teaching, and then follows it. <sup>48</sup> It is like a person building a house who digs deep and lays the foundation on solid rock. When the floodwaters rise and break against that house, it stands firm because it is well built.



## Luke 6

49 But anyone who hears and doesn't obey is like a person who builds a house without a foundation. When the floods sweep down against that house, it will collapse into a heap of ruins.”

# WHAT ARE MY LIFE-CHOICES FOUNDED ON?



